



Communities In Schools

Seattle

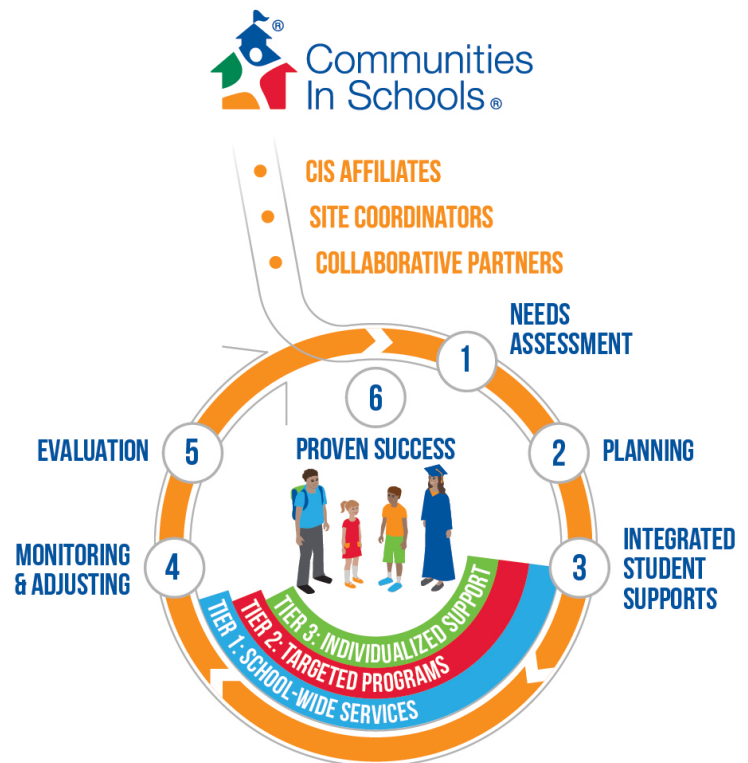
Our mission is to surround students with a community of support, empowering them to stay in school and achieve in life.

What does Communities In Schools of Seattle do?

Communities In Schools of Seattle is a part of the nation's leading dropout prevention program, connecting kids to caring adults and critical community resources that help break down barriers to graduation. We partner with schools to assess needs, develop a plan and build a system of integrated student supports to ensure that all students - regardless of race, gender, zip code, or socioeconomic background - have what they need to realize their potential in school and beyond.

How does Communities In Schools of Seattle support students and schools?

Communities In Schools of Seattle hires and trains Site Coordinators to work directly inside school buildings with students, families and school staff. In partnership with school leaders, Site Coordinators complete an annual needs assessment and develop a responsive support plan that addresses individual student and school-wide needs. Throughout the school year, Site Coordinators work closely with a caseload of students who are facing the biggest barriers to graduation to improve their attendance, behavior and coursework, as well as coordinate services geared toward the entire school. Site Coordinators regularly monitor and evaluate progress, adjusting services as needed to ensure that students and schools are continuously connected to the right supports.



© 2019 Communities In Schools, Inc.

What kind of support services does Communities In Schools of Seattle coordinate?

Communities In Schools of Seattle coordinates, brokers or directly provides services in the following areas:

- Academic Assistance
- Basic Needs
- Behavioral Interventions
- College & Career Prep
- Community & Service Learning
- Enrichment
- Family Engagement
- Life Skills
- Physical Health
- Mental Health



Communities In Schools

Seattle

What impact does Communities In Schools of Seattle have?

The Communities In Schools model has continuously been proven to decrease dropout rates, boost on-time graduation rates and improve overall education outcomes. When students began learning remotely in March 2020, Communities In Schools of Seattle quickly adapted and has continued to support our students, families and schools through the ups and downs of remote learning and other challenges brought on by the COVID-19 pandemic. In the face of so much uncertainty and instability, the 179 students we worked most closely with during the 2019-20 school year stayed engaged in their education and continued to make progress toward their goals.



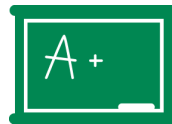
99%

of our students stayed in school



75%

improved their attendance



80%

improved their academics



94%

improved their behavior

What have school partners said about Communities In Schools of Seattle?

Across all of our partnerships, this much is clear: Communities In Schools of Seattle is a critical, highly valued partner in each school community. In the words of one middle school assistant principal, "Our Site Coordinator is always ready and willing to jump in wherever help is needed to get the job done. They have been instrumental in supporting our students and families and are an invaluable asset to our community." We know that schools have a lot on their plate, and Communities In Schools of Seattle is here to help.

"Our Site Coordinator has been a great team member - helping not only meet basic needs but also supporting SEL and academic focuses."

"The Site Coordinator at our school is a huge advocate for students; they created a safe place for students at school where they feel seen, heard and validated, while still holding them accountable."

"The food bag program that our Site Coordinator organizes is a critical support for students and families at our school."

"Our Site Coordinator connects with students and families with compassion and skill, always taking the time to truly listen and respond efficiently to the diversity of needs presented on a daily basis."

Where can I learn more about Communities In Schools of Seattle?

Visit our website at www.seattle.ciswa.org to learn more about our current school partnerships, explore different opportunities to support our work and get to know our team. Connect with us on social media to stay up-to-date on all things Communities In Schools of Seattle!



FOLLOW US